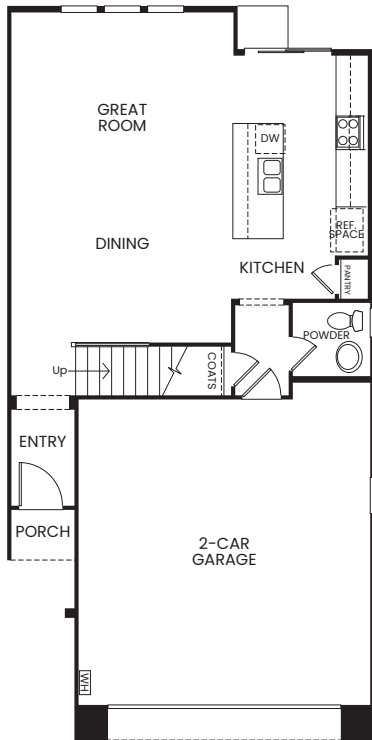


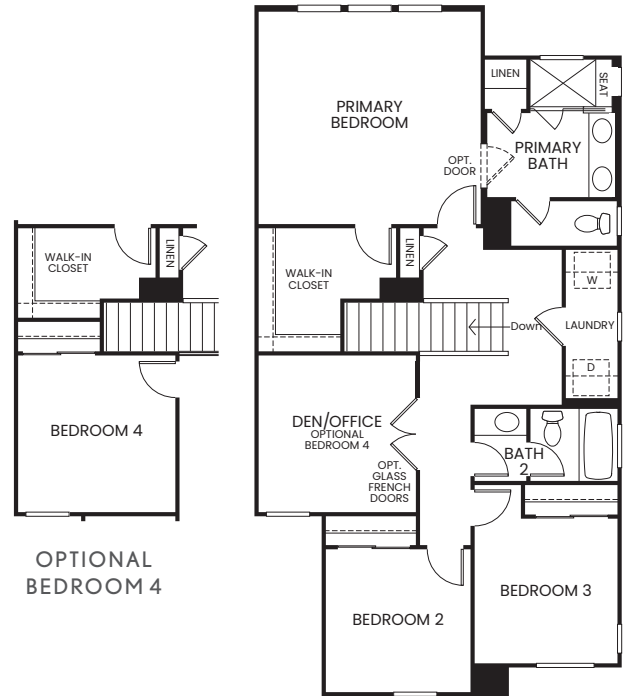
# Residence 2AX

1,702 Sq. Ft. • 3 - 4 Bedrooms • 2.5 Bathrooms • 2-Car Garage

## FIRST FLOOR



## SECOND FLOOR



Santa Barbara Elevation



Anaca Canyon is a residential development located on land that is a part of the campus of California State University Channel Islands ("CSUCI"), which is owned by the Trustees of the California State University ("CSU"). CSU leased such land to the California State University Channel Islands Site Authority ("Site Authority") for the Site Authority to develop an on-campus residential community. Each residential unit within Anaca Canyon will be subleased by the Site Authority to the homebuyers. Each homebuyer at Anaca Canyon is electing to make an investment in and a commitment to the development of an on-campus community that will remain a pleasant and enjoyable place to live at CSUCI. Each homebuyer at Anaca Canyon will be purchasing a subleasehold estate from the Site Authority. Such subleasehold estate does not grant fee ownership of the residential unit. The subleasehold estate only grants the homebuyer (as sublessee/subtenant) the exclusive rights to occupy and use the residential unit for the term of the lease period. © 2023 Comstock Homes. All photographs, renderings and illustrations are artists' concepts only, are not to scale and are subject to change in actual production. Square footage is approximate. Renderings do not represent actual homesites. Comstock Homes Broker, Inc. CA DRE license no. 01912034.

